

Commerce Park Milwaukie

Building 4

13505 SE Johnson Road
Milwaukie, Oregon



Contact

Steven Klein

503.221.2260

sklein@kiddermathews.com

Peter Stalick

503.221.2272

pstalick@kiddermathews.com

www.commerce-parks.com

Features

±10,000 SF available

±1,525 SF office

4 grade level loading doors

±16' clear height

Heavy Power distributed throughout warehouse which is ideal for assembly/
manufacturing use

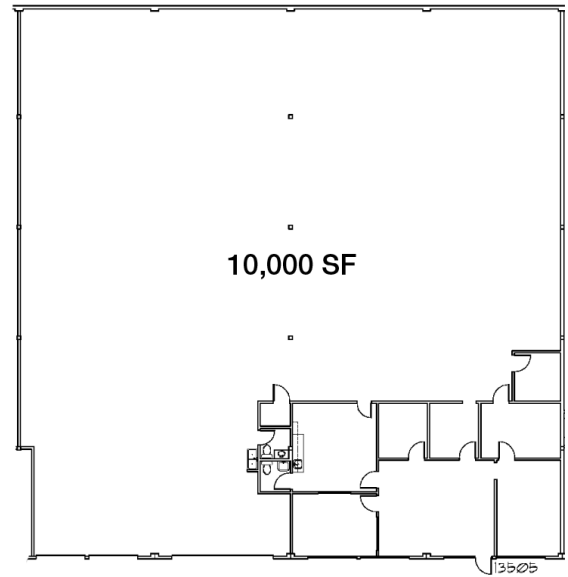
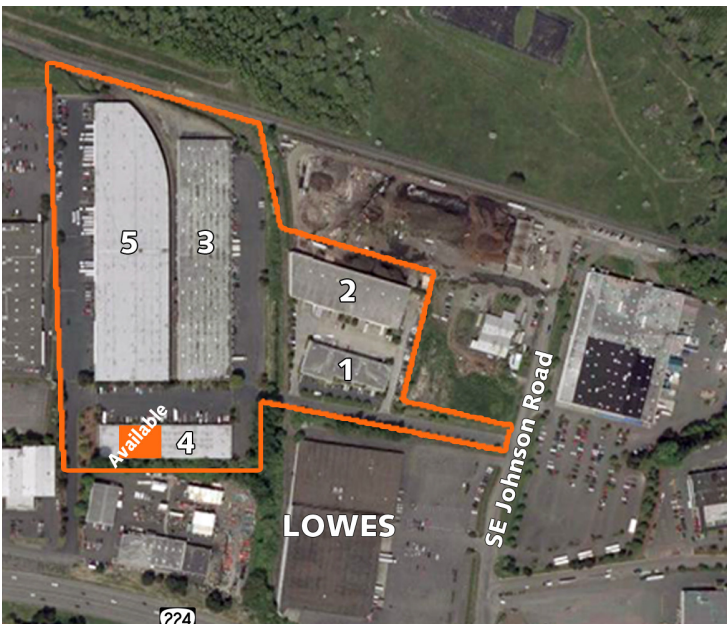
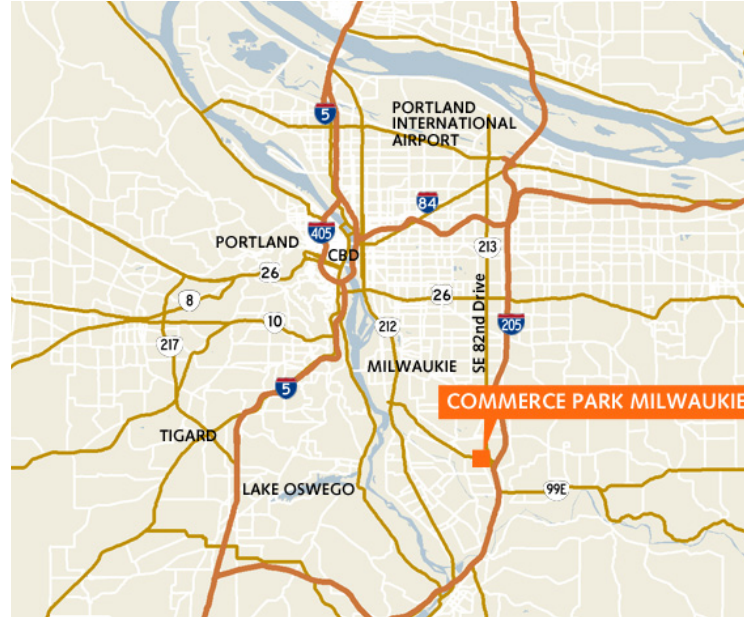
Fully sprinklered

Lease rate: Call for quote

Commerce Park Milwaukie has excellent proximity to the I-205 freeway and access to downtown Portland. Many employee amenities are nearby, including banks, post office, and several stores and restaurants



Commerce Park Milwaukie, Bldg 4



Contact

Steven Klein
503.221.2260
sklein@kiddermathews.com

Peter Stalick
503.221.2272
pstalick@kiddermathews.com



www.commerce-parks.com