

Commerce Park Milwaukie

Building 3

13533 SE Johnson Road
Milwaukie, Oregon



Contact

Steven Klein
503.221.2260
sklein@kiddermathews.com

Peter Stalick
503.221.2272
pstalick@kiddermathews.com

www.commerce-parks.com

Features

Commerce Park Milwaukie has excellent proximity to the I-205 freeway and access to downtown Portland

Many employee amenities are nearby, including banks, post office, and several stores and restaurants

±12,000 SF bldg

±600 SF office

2 dock high loading doors

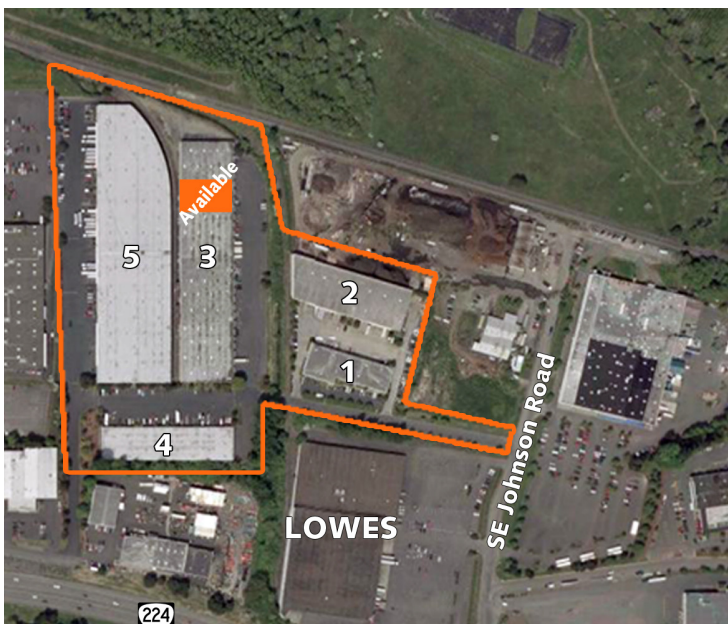
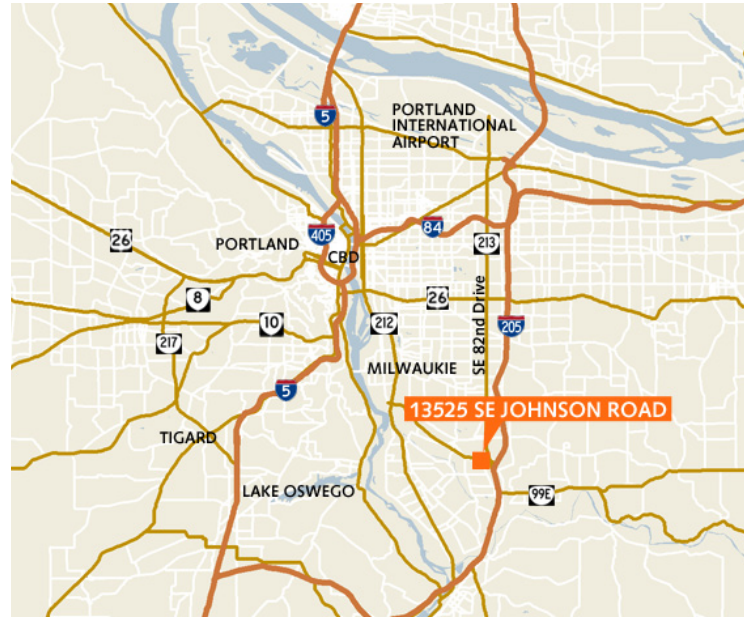
±22' clear height

Fully sprinklered

Lease rate: Call for quote



Commerce Park Milwaukie, Bldg 3



Contact

Steven Klein
503.221.2260
sklein@kiddermathews.com

Peter Stalick
503.221.2272
pstalick@kiddermathews.com



www.commerce-parks.com